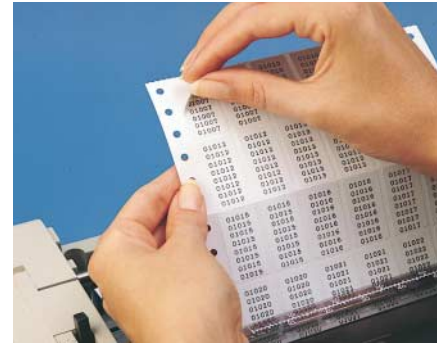


## Narrow Carriage Printer Cross-Reference

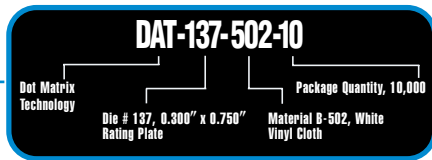
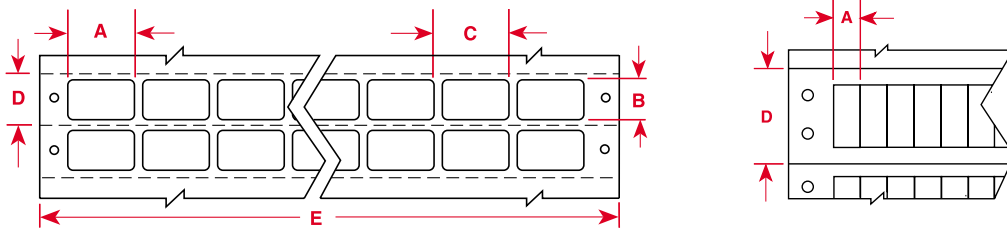
These wide carriage labels will not fit narrow carriage (80-column) printers. Identical labels on narrow carriage liners are listed below.



Print your own wire markers in-house as you need them. (Product shown: DAT-5-502)

WIDE CARRIAGE MODELS		NARROW CARRIAGE EQUIVALENTS	
Part Number	Specifications On Page	Part Number	Specifications On Page
DAT-1-637	160	DAT-49-637	160
DAT-2-637	161	DAT-72-637	161
DAT-8-292	170	DAT-63-292	170
DAT-9-292	171	DAT-75-292	171
DAT-10-637	161	DAT-73-637	161
DAT-12-502	161	DAT-64-502	161
DAT-14-292	171	DAT-65-292	171
DAT-23-637	161	DAT-74-637	161
DAT-30-292	170	DAT-66-292	170
DAT-31-502	159	DAT-67-502	159
DAT-32-632	159	DAT-68-632	159
DAT-41-292	170	DAT-69-292	170
DAT-42-292	170	DAT-70-292	170
DAT-55-642	170	DAT-71-642	170

## Label Index by Size



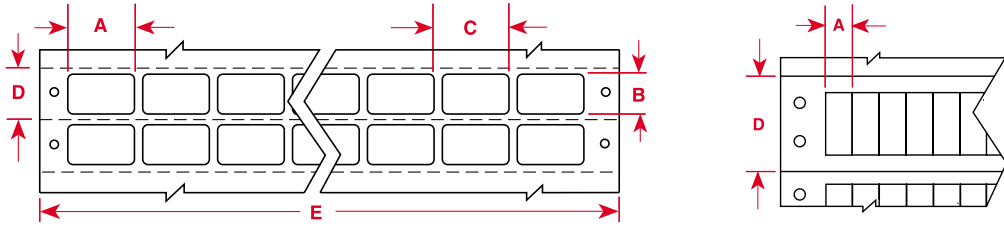
### PART NUMBER EXPLANATION:

Most Brady part numbers for computer printable labels follow the same four-part format:

The first code indicates the technology, the second part is a number indicating the die size used (where applicable), the third part indicates the Brady material used (where applicable), and the final code indicates package quantity.

Part Number	Pieces Per Package	Material	Color	Labels Per Row	Label Width Inch (mm) A	Label Height Inch (mm) B	Horizontal Repeat Inch (mm) C	Vertical Repeat Inch (mm) D	Web Width Inch (mm) E
<b>0.300" Label Width — 6 or 8 lines per inch — Square Corners</b>									
DAT-137-502-10	10,000	Vinyl Cloth	White	16	0.300 (762)	0.750 (19.05)	0.300 (762)	1.000 (25.40)	5.800 (147.32)
DAT-138-632-10	10,000	Polyvinylfluoride	White	16	0.300 (762)	0.750 (19.05)	0.300 (762)	1.000 (25.40)	5.800 (147.32)
DAT-140-502-10	10,000	Vinyl Cloth	White	16	0.300 (762)	0.937 (23.80)	0.300 (762)	1.000 (25.40)	5.800 (147.32)
DAT-141-632-10	10,000	Polyvinylfluoride	White	16	0.300 (762)	0.937 (23.80)	0.300 (762)	1.000 (25.40)	5.800 (147.32)
<b>0.375" Label Width — 6 or 8 lines per inch</b>									
DAT-113-164-10	10,000	Polyester	Silver	16	0.375 (9.53)	0.375 (9.53)	0.500 (12.70)	0.500 (12.70)	8.900 (226.06)
DAT-114-673-10	10,000	Polyester	White	16	0.375 (9.53)	0.375 (9.53)	0.500 (12.70)	0.500 (12.70)	8.900 (226.06)
DAT-115-652-10	10,000	Polyimide	Amber	16	0.375 (9.53)	0.375 (9.53)	0.500 (12.70)	0.500 (12.70)	8.900 (226.06)
DAT-116-658-10	10,000	Polyimide	Amber	16	0.375 (9.53)	0.375 (9.53)	0.500 (12.70)	0.500 (12.70)	8.900 (226.06)
DAT-117-607-10	10,000	Tamper-Resistant Vinyl	White	16	0.375 (9.53)	0.375 (9.53)	0.500 (12.70)	0.500 (12.70)	8.900 (226.06)
DAT-118-619-10	10,000	Polyester	White	16	0.375 (9.53)	0.375 (9.53)	0.500 (12.70)	0.500 (12.70)	8.900 (226.06)
DAT-119-502-10	10,000	Vinyl Cloth	White	16	0.375 (9.53)	0.375 (9.53)	0.500 (12.70)	0.500 (12.70)	8.900 (226.06)

**Note:** Labels in chart are sorted in order by width, height, 3 digit material number (within part number), then die number (within part number).



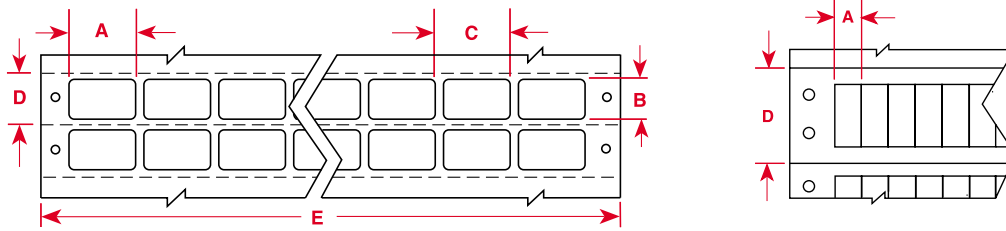
Part Number	Pieces Per Package	Material	Color	Labels Per Row	Label Width Inch (mm) A	Label Height Inch (mm) B	Horizontal Repeat Inch (mm) C	Vertical Repeat Inch (mm) D	Web Width Inch (mm) E
<b>0.400" Label Width — 6 or 8 lines per inch</b>									
DAT-179-619-10	10,000	Polyester	White	16	0.400 (10.16)	0.200 (5.08)	0.500 (12.70)	0.250 (6.35)	8.900 (226.06)
DAT-179-652-10	10,000	Polyimide	Amber	16	0.400 (10.16)	0.200 (5.08)	0.500 (12.70)	0.250 (6.35)	8.900 (226.06)
<b>0.500" Label Width — 6 or 8 lines per inch</b>									
DAT-67-499-10	10,000	Nylon Cloth	White	12	0.500 (12.70)	0.750 (19.05)	0.600 (15.24)	1.000 (25.40)	8.100 (205.74)
DAT-67-502-10	10,000	Vinyl Cloth	White	12	0.500 (12.70)	0.750 (19.05)	0.600 (15.24)	1.000 (25.40)	8.100 (205.74)
DAT-68-632-10	10,000	Polyvinylfluoride	White	12	0.500 (12.70)	0.750 (19.05)	0.600 (15.24)	1.000 (25.40)	8.100 (205.74)
DAT-31-502*-10	10,000	Vinyl Cloth	White	14	0.500 (12.70)	0.750 (19.05)	0.600 (15.24)	1.000 (25.40)	9.300 (236.22)
DAT-32-632*-10	10,000	Polyvinylfluoride	White	14	0.500 (12.70)	0.750 (19.05)	0.600 (15.24)	1.000 (25.40)	9.300 (236.22)
DAT-21-110-10	10,000	Saturated Paper	White	12	0.500 (12.70)	1.437 (36.50)	0.600 (15.24)	1.500 (38.10)	8.100 (205.74)
DAT-24-502-10	10,000	Vinyl Cloth	White	12	0.500 (12.70)	1.437 (36.50)	0.600 (15.24)	1.500 (38.10)	8.100 (205.74)
<b>0.500" Label Width — 6 or 8 lines per inch — Square Corners</b>									
DAT-43-502-10	10,000	Vinyl Cloth	White	16	0.500 (12.70)	0.437 (11.10)	0.500 (12.70)	0.500 (12.70)	9.000 (228.60)
DAT-44-607-10	10,000	Tamper-Resistant Vinyl	White	16	0.500 (12.70)	0.437 (11.10)	0.500 (12.70)	0.500 (12.70)	9.000 (228.60)
DAT-45-619-10	10,000	Polyester	White	16	0.500 (12.70)	0.437 (11.10)	0.500 (12.70)	0.500 (12.70)	9.000 (228.60)
DAT-46-693-10	10,000	Metallized Polyester	Silver	16	0.500 (12.70)	0.437 (11.10)	0.500 (12.70)	0.500 (12.70)	9.000 (228.60)
DAT-46-969-10	10,000	Metallized Polyester	Silver	16	0.500 (12.70)	0.437 (11.10)	0.500 (12.70)	0.500 (12.70)	9.000 (228.60)
DAT-98-673-10	10,000	Polyester	Silver	16	0.500 (12.70)	0.437 (11.10)	0.500 (12.70)	0.500 (12.70)	9.000 (228.60)
DAT-143-502-10	10,000	Vinyl Cloth	White	16	0.500 (12.70)	0.937 (23.80)	0.500 (12.70)	1.000 (25.40)	9.000 (228.60)
DAT-144-632-10	10,000	Polyvinylfluoride	White	16	0.500 (12.70)	0.937 (23.80)	0.500 (12.70)	1.000 (25.40)	9.000 (228.60)
DAT-171-652-10	10,000	Polyimide	Amber	16	0.500 (12.70)	0.437 (11.10)	0.500 (12.70)	0.500 (12.70)	9.000 (228.60)
<b>0.650" Label Width — 6 or 8 lines per inch</b>									
DAT-15-502-1-10	10,000	Vinyl Cloth	White	10	0.650 (16.51)	0.200 (5.08)	0.800 (20.32)	0.250 (6.35)	8.850 (224.79)
DAT-16-607-10	10,000	Tamper-Resistant Vinyl	White	10	0.650 (16.51)	0.200 (5.08)	0.800 (20.32)	0.250 (6.35)	8.850 (224.79)
DAT-17-619-10	10,000	Polyester	White	10	0.650 (16.51)	0.200 (5.08)	0.800 (20.32)	0.250 (6.35)	8.850 (224.79)
DAT-56-637-10	10,000	Tedlar®	White	10	0.650 (16.51)	0.200 (5.08)	0.800 (20.32)	0.250 (6.35)	8.850 (224.79)
DAT-58-652-10	10,000	Polyimide	Amber	10	0.650 (16.51)	0.200 (5.08)	0.800 (20.32)	0.250 (6.35)	8.850 (224.79)
DAT-88-693-10	10,000	Polyester	Silver	10	0.650 (16.51)	0.200 (5.08)	0.800 (20.32)	0.250 (6.35)	8.850 (224.79)
DAT-88-969-10	10,000	Polyester	Silver	10	0.650 (16.51)	0.200 (5.08)	0.800 (20.32)	0.250 (6.35)	8.850 (224.79)
DAT-109-658-10	10,000	Polyimide	Amber	10	0.650 (16.51)	0.200 (5.08)	0.800 (20.32)	0.250 (6.35)	8.850 (224.79)
DAT-111-164-10	10,000	Polyester	Silver	10	0.650 (16.51)	0.200 (5.08)	0.800 (20.32)	0.250 (6.35)	8.850 (224.79)
<b>0.750" Label Width — 6 lines per inch</b>									
DAT-25-502-10	10,000	Vinyl Cloth	White	9	0.750 (19.05)	0.250 (6.35)	0.900 (22.86)	0.330 (8.46)	9.000 (228.60)
DAT-26-607-10	10,000	Tamper-Resistant Vinyl	White	9	0.750 (19.05)	0.250 (6.35)	0.900 (22.86)	0.330 (8.46)	9.000 (228.60)
DAT-27-619-10	10,000	Polyester	White	9	0.750 (19.05)	0.250 (6.35)	0.900 (22.86)	0.330 (8.46)	9.000 (228.60)
DAT-89-969-10	10,000	Polyester	Silver	9	0.750 (19.05)	0.250 (6.35)	0.900 (22.86)	0.330 (8.46)	9.000 (228.60)
DAT-96-652-10	10,000	Polyimide	Amber	9	0.750 (19.05)	0.250 (6.35)	0.900 (22.86)	0.330 (8.46)	9.000 (228.60)
DAT-110-658-10	10,000	Polyimide	Amber	9	0.750 (19.05)	0.250 (6.35)	0.900 (22.86)	0.330 (8.46)	9.000 (228.60)
DAT-112-164-10	10,000	Polyester	Silver	9	0.750 (19.05)	0.250 (6.35)	0.900 (22.86)	0.330 (8.46)	9.000 (228.60)
DAT-161-637-10	10,000	Polyvinylfluoride	White	9	0.750 (19.05)	0.250 (6.35)	0.900 (22.86)	0.330 (8.46)	9.000 (228.60)

Tedlar® is a registered trademark of DuPont.

\* Size does not fit narrow carriage (80-column) printers. See p. 158 for identical narrow carriage labels.

**Note:** Labels in chart are sorted in order by height, 3 digit material number (within part number), then die number (within part number).

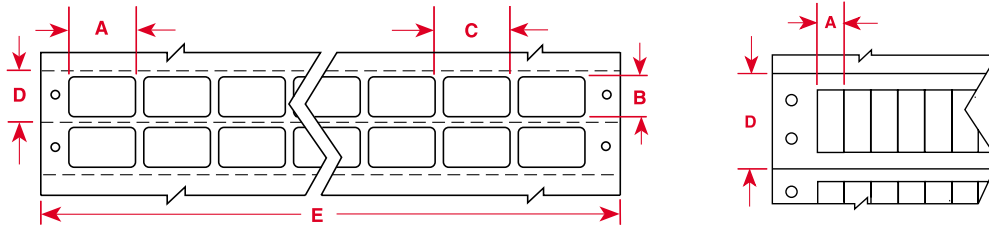
Label Index by Size



Part Number	Pieces Per Package	Material	Color	Labels Per Row	Label Width Inch (mm) A	Label Height Inch (mm) B	Horizontal Repeat Inch (mm) C	Vertical Repeat Inch (mm) D	Web Width Inch (mm) E	
<b>0.750" Label Width — 8 lines per inch</b>										
DAT-124-502-10	10,000	Vinyl Cloth	White	9	0.750 (19.05)	0.250 (6.35)	0.900 (22.86)	0.375 (9.53)	9.000 (228.60)	
DAT-125-607-10	10,000	Tamper-Resistant Vinyl	White	9	0.750 (19.05)	0.250 (6.35)	0.900 (22.86)	0.375 (9.53)	9.000 (228.60)	
DAT-126-619-10	10,000	Polyester	White	9	0.750 (19.05)	0.250 (6.35)	0.900 (22.86)	0.375 (9.53)	9.000 (228.60)	
DAT-127-969-10	10,000	Polyester	Silver	9	0.750 (19.05)	0.250 (6.35)	0.900 (22.86)	0.375 (9.53)	9.000 (228.60)	
DAT-128-652-10	10,000	Polyimide	Amber	9	0.750 (19.05)	0.250 (6.35)	0.900 (22.86)	0.375 (9.53)	9.000 (228.60)	
DAT-129-658-10	10,000	Polyimide	Amber	9	0.750 (19.05)	0.250 (6.35)	0.900 (22.86)	0.375 (9.53)	9.000 (228.60)	
DAT-130-164-10	10,000	Polyester	Silver	9	0.750 (19.05)	0.250 (6.35)	0.900 (22.86)	0.375 (9.53)	9.000 (228.60)	
<b>0.800" Label Width — 6 or 8 lines per inch</b>										
DAT-5-499-10	10,000	Nylon Cloth	White	6	0.800 (20.32)	1.437 (36.50)	0.900 (22.86)	1.500 (38.10)	6.300 (160.02)	
DAT-5-502-10	10,000	Vinyl Cloth	White	6	0.800 (20.32)	1.437 (36.50)	0.900 (22.86)	1.500 (38.10)	6.300 (160.02)	
DAT-6-632-10	10,000	Polyvinylfluoride	White	6	0.800 (20.32)	1.437 (36.50)	0.900 (22.86)	1.500 (38.10)	6.300 (160.02)	
<b>0.800" Label Width — 6 or 8 lines per inch — Square Corners</b>										
DAT-146-502-10	10,000	Vinyl Cloth	White	10	0.800 (20.32)	0.937 (23.80)	0.800 (20.32)	1.000 (25.40)	9.000 (228.60)	
DAT-147-632-10	10,000	Polyvinylfluoride	White	10	0.800 (20.32)	0.937 (23.80)	0.800 (20.32)	1.000 (25.40)	9.000 (228.60)	
<b>0.900" Label Width — 6 lines per inch</b>										
DAT-1-637-10*	10,000	Polyvinylfluoride	White	10	0.900 (22.86)	0.250 (6.35)	1.000 (25.40)	0.330 (8.46)	10.900 (276.86)	
DAT-49-637-10	10,000	Polyvinylfluoride	White	8	0.900 (22.86)	0.250 (6.35)	1.000 (25.40)	0.330 (8.46)	8.900 (226.06)	
DAT-50-652-10	10,000	Polyimide	Amber	8	0.900 (22.86)	0.250 (6.35)	1.000 (25.40)	0.330 (8.46)	8.900 (226.06)	
DAT-60-619-10	10,000	Polyester	White	8	0.900 (22.86)	0.250 (6.35)	1.000 (25.40)	0.330 (8.46)	8.900 (226.06)	
DAT-120-164-10	10,000	Polyester	Silver	8	0.900 (22.86)	0.250 (6.35)	1.000 (25.40)	0.330 (8.46)	8.900 (226.06)	
<b>0.900" Label Width — 8 lines per inch</b>										
DAT-132-637-10	10,000	Polyvinylfluoride	White	8	0.900 (22.86)	0.250 (6.35)	1.000 (25.40)	0.375 (9.53)	8.900 (226.06)	
DAT-133-652-10	10,000	Polyimide	Amber	8	0.900 (22.86)	0.250 (6.35)	1.000 (25.40)	0.375 (9.53)	8.900 (226.06)	
DAT-134-619-10	10,000	Polyester	White	8	0.900 (22.86)	0.250 (6.35)	1.000 (25.40)	0.375 (9.53)	8.900 (226.06)	
DAT-135-164-10	10,000	Polyester	Silver	8	0.900 (22.86)	0.250 (6.35)	1.000 (25.40)	0.375 (9.53)	8.900 (226.06)	
<b>1.000" Label Width — 6 lines per inch</b>										
DAT-18-499-10	10,000	Nylon Cloth	White	7	1.000 (25.40)	0.500 (12.70)	1.100 (27.94)	0.667 (16.94)	8.600 (218.44)	
DAT-18-502-10	10,000	Vinyl Cloth	White	7	1.000 (25.40)	0.500 (12.70)	1.100 (27.94)	0.667 (16.94)	8.600 (218.44)	
DAT-19-607-10	10,000	Tamper-Resistant Vinyl	White	7	1.000 (25.40)	0.500 (12.70)	1.100 (27.94)	0.667 (16.94)	8.600 (218.44)	
DAT-20-619-10	10,000	Polyester	White	7	1.000 (25.40)	0.500 (12.70)	1.100 (27.94)	0.667 (16.94)	8.600 (218.44)	
DAT-47-693-10	10,000	Metallized Polyester	Silver	7	1.000 (25.40)	0.500 (12.70)	1.100 (27.94)	0.667 (16.94)	8.600 (218.44)	
DAT-47-969-10	10,000	Metallized Polyester	Silver	7	1.000 (25.40)	0.500 (12.70)	1.100 (27.94)	0.667 (16.94)	8.600 (218.44)	
DAT-57-637-10	10,000	Polyvinylfluoride	White	7	1.000 (25.40)	0.500 (12.70)	1.100 (27.94)	0.667 (16.94)	8.600 (218.44)	
DAT-59-652-10	10,000	Polyimide	Amber	7	1.000 (25.40)	0.500 (12.70)	1.100 (27.94)	0.667 (16.94)	8.600 (218.44)	
DAT-97-673-10	10,000	Polyester	White	7	1.000 (25.40)	0.500 (12.70)	1.100 (27.94)	0.667 (16.94)	8.600 (218.44)	
DAT-99-637-10	10,000	Polyvinylfluoride	Yellow	7	1.000 (25.40)	0.500 (12.70)	1.100 (27.94)	0.667 (16.94)	8.600 (218.44)	
DAT-163-621-10	10,000	Polyester	Clear	7	1.000 (25.40)	0.500 (12.70)	1.100 (27.94)	0.667 (16.90)	8.600 (218.44)	
DAT-181-619-10	10,000	Polyester	White	7	1.000 (25.40)	0.250 (6.35)	1.100 (27.94)	0.333 (8.46)	8.600 (218.44)	

\*Size does not fit narrow carriage (80-column) printers. See p. 158 for identical narrow carriage labels.

**Note:** Labels in chart are sorted in order by width, height, 3 digit material number (within part number), then die number (within part number).

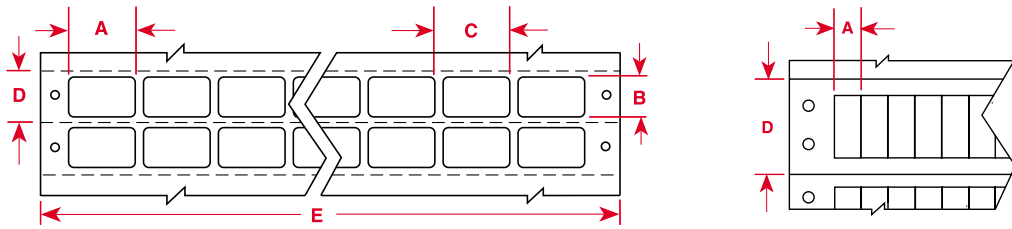


Part Number	Pieces Per Package	Material	Color	Labels Per Row	Label Width Inch (mm) A	Label Height Inch (mm) B	Horizontal Repeat Inch (mm) C	Vertical Repeat Inch (mm) D	Web Width Inch (mm) E
<b>1.000" Label Width — 6 or 8 lines per inch</b>									
DAT-11-499-10	10,000	Nylon Cloth	White	7	1.000 (25.40)	0.375 (9.53)	1.100 (27.94)	0.500 (12.70)	8.600 (218.44)
DAT-11-502-10	10,000	Vinyl Cloth	White	7	1.000 (25.40)	0.375 (9.53)	1.100 (27.94)	0.500 (12.70)	8.600 (218.44)
DAT-51-619-10	10,000	Polyester	White	7	1.000 (25.40)	0.375 (9.53)	1.100 (27.94)	0.500 (12.70)	8.600 (218.44)
DAT-83-502-10	10,000	Vinyl Cloth	White	7	1.000 (25.40)	0.750 (19.05)	1.100 (27.94)	1.000 (25.40)	8.600 (218.44)
DAT-84-632-10	10,000	Polyvinylfluoride	White	7	1.000 (25.40)	0.750 (19.05)	1.100 (27.94)	1.000 (25.40)	8.600 (218.44)
<b>1.000" Label Width — 6 or 8 lines per inch — Square Corners</b>									
DAT-149-502-10	10,000	Vinyl Cloth	White	8	1.000 (25.40)	0.937 (23.80)	1.000 (25.40)	1.000 (25.40)	9.000 (228.60)
DAT-150-632-10	10,000	Polyvinylfluoride	White	8	1.000 (25.40)	0.937 (23.80)	1.000 (25.40)	1.000 (25.40)	9.000 (228.60)
<b>1.125" Label Width — 8 lines per inch</b>									
DAT-160-502-10	10,000	Vinyl Cloth	White	4	1.125 (28.58)	0.530 (13.46)	1.600 (40.64)	0.625 (15.88)	7.300 (185.42)
<b>1.250" Label Width — 6 or 8 lines per inch</b>									
DAT-2-637-10*	10,000	Polyvinylfluoride	Yellow	7	1.250 (31.75)	0.375 (9.53)	1.400 (35.56)	0.500 (12.70)	10.750 (273.05)
DAT-72-637-10	10,000	Polyvinylfluoride	Yellow	5	1.250 (31.75)	0.375 (9.53)	1.400 (35.56)	0.500 (12.70)	7.950 (201.93)
DAT-73-637-10	10,000	Polyvinylfluoride	White	5	1.250 (31.75)	0.375 (9.53)	1.400 (35.56)	0.500 (12.70)	7.950 (201.93)
DAT-74-637-10	10,000	Polyvinylfluoride	Gray	5	1.250 (31.75)	0.375 (9.53)	1.400 (35.56)	0.500 (12.70)	7.950 (201.93)
DAT-10-637*-10	10,000	Polyvinylfluoride	White	7	1.250 (31.75)	0.375 (9.53)	1.400 (35.56)	0.500 (12.70)	10.750 (273.05)
DAT-23-637*-10	10,000	Polyvinylfluoride	Gray	7	1.250 (31.75)	0.375 (9.53)	1.400 (35.56)	0.500 (12.70)	10.750 (273.05)
<b>1.500" Label Width — 8 lines per inch</b>									
BCDAT-8-619-5	5,000	Polyester	White	4	1.500 (38.10)	0.250 (6.35)	1.600 (40.64)	0.375 (9.53)	7.300 (185.42)
BCDAT-8-652-5	5,000	Polyimide	Amber	4	1.500 (38.10)	0.250 (6.35)	1.600 (40.64)	0.375 (9.53)	7.300 (185.42)
<b>1.600" Label Width — 8 lines per inch</b>									
DAT-170-969-10	10,000	Polyester	Silver	4	1.600 (40.64)	0.375 (9.53)	1.700 (43.18)	0.500 (12.70)	7.700 (195.58)
<b>2.000" Label Width — 6 or 8 lines per inch</b>									
BCDAT-10-619-10	10,000	Polyester	White	3	2.000 (50.80)	0.375 (9.53)	2.100 (53.34)	0.500 (12.70)	7.200 (182.88)
BCDAT-10-652-10	10,000	Polyimide	Amber	3	2.000 (50.80)	0.375 (9.53)	2.100 (53.34)	0.500 (12.70)	7.200 (182.88)
DAT-64-502-10	10,000	Vinyl Cloth	White	3	2.000 (50.80)	0.375 (9.53)	2.100 (53.34)	0.500 (12.70)	7.200 (182.88)
DAT-12-502*-10	10,000	Vinyl Cloth	White	4	2.000 (50.80)	0.375 (9.53)	2.100 (53.34)	0.500 (12.70)	9.300 (236.22)
BCDAT-1-609-5	5,000	Paper	White	3	2.000 (50.80)	0.900 (22.86)	2.100 (53.34)	1.000 (25.40)	7.200 (182.88)
BCDAT-1-619-5	5,000	Polyester	White	3	2.000 (50.80)	0.900 (22.86)	2.100 (53.34)	1.000 (25.40)	7.200 (182.88)
DAT-77-969-5	5,000	Metallized Polyester	Silver	3	2.000 (50.80)	0.900 (22.86)	2.100 (53.34)	1.000 (25.40)	7.200 (182.88)
BCDAT-3-609-5	5,000	Paper	White	3	2.000 (50.80)	1.437 (36.50)	2.100 (53.34)	1.500 (38.10)	7.200 (182.88)
BCDAT-3-619-5	5,000	Polyester	White	3	2.000 (50.80)	1.437 (36.50)	2.100 (53.34)	1.500 (38.10)	7.200 (182.88)
DAT-79-969-5	5,000	Metallized Polyester	Silver	3	2.000 (50.80)	1.437 (36.50)	2.100 (53.34)	1.500 (38.10)	7.200 (182.88)
<b>2.000" Label Width — 8 lines per inch</b>									
BCDAT-9-619-5	5,000	Polyester	White	3	2.000 (50.80)	0.250 (6.35)	2.100 (53.34)	0.375 (9.53)	7.200 (182.88)
BCDAT-9-652-5	5,000	Polyimide	Amber	3	2.000 (50.80)	0.250 (6.35)	2.100 (53.34)	0.375 (9.53)	7.200 (182.88)

\*Size does not fit narrow carriage (80-column) printers. See p. 158 for identical narrow carriage labels.

**Note:** Labels in chart are sorted in order by width, height, 3 digit material number (within part number), then die number (within part number).

Label Index by Size

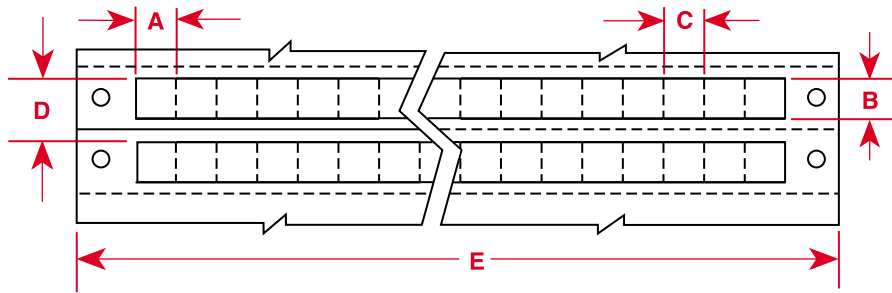


Part Number	Pieces Per Package	Material	Color	Labels Per Row	Label Width Inch (mm) A	Label Height Inch (mm) B	Horizontal Repeat Inch (mm) C	Vertical Repeat Inch (mm) D	Web Width Inch (mm) E
<b>3.000" Label Width — 6 or 8 lines per inch</b>									
BCDAT-11-619-10	10,000	Polyester	White	2	3.000 (76.20)	0.375 (9.53)	3.100 (78.74)	0.500 (12.70)	7.100 (180.34)
BCDAT-11-652-10	10,000	Polyimide	Amber	2	3.000 (76.20)	0.375 (9.53)	3.100 (78.74)	0.500 (12.70)	7.100 (180.34)
DAT-13-502-10	10,000	Vinyl Cloth	White	2	3.000 (76.20)	0.375 (9.53)	3.100 (78.74)	0.500 (12.70)	7.100 (180.34)
BCDAT-2-609-5	5,000	Paper	White	2	3.000 (76.20)	0.900 (22.86)	3.100 (78.74)	1.000 (25.40)	7.100 (180.34)
BCDAT-2-619-5	5,000	Polyester	White	2	3.000 (76.20)	0.900 (22.86)	3.100 (78.74)	1.000 (25.40)	7.100 (180.34)
DAT-78-969-5	5,000	Metallized Polyester	Silver	2	3.000 (76.20)	0.900 (22.86)	3.100 (78.74)	1.000 (25.40)	7.100 (180.34)
BCDAT-4-609-5	5,000	Paper	White	2	3.000 (76.20)	1.437 (36.50)	3.100 (78.74)	1.500 (38.10)	7.100 (180.34)
BCDAT-4-619-5	5,000	Polyester	White	2	3.000 (76.20)	1.437 (36.50)	3.100 (78.74)	1.500 (38.10)	7.100 (180.34)
DAT-80-969-5	5,000	Metallized Polyester	Silver	2	3.000 (76.20)	1.437 (36.50)	3.100 (78.74)	1.500 (38.10)	7.100 (180.34)
BCDAT-6-609-5	5,000	Paper	White	2	3.000 (76.20)	1.900 (48.26)	3.100 (78.74)	2.000 (50.80)	7.100 (180.34)
BCDAT-6-619-5	5,000	Polyester	White	2	3.000 (76.20)	1.900 (48.26)	3.100 (78.74)	2.000 (50.80)	7.100 (180.34)
DAT-82-969-5	5,000	Metallized Polyester	Silver	2	3.000 (76.20)	1.900 (48.26)	3.100 (78.74)	2.000 (50.80)	7.100 (180.34)
<b>3.900" Label Width — 6 or 8 lines per inch</b>									
BCDAT-5-609-5	5,000	Paper	White	2	3.900 (99.06)	1.437 (36.50)	4.000 (101.60)	1.500 (38.10)	8.900 (226.06)
BCDAT-5-619-5	5,000	Polyester	White	2	3.900 (99.06)	1.437 (36.50)	4.000 (101.60)	1.500 (38.10)	8.900 (226.06)
DAT-81-969-5	5,000	Metallized Polyester	Silver	2	3.900 (99.06)	1.437 (36.50)	4.000 (101.60)	1.500 (38.10)	8.900 (226.06)

**Note:** Labels in chart are sorted in order by width, height, 3 digit material number (within part number), then die number (within part number).

► BUTT-CUT WITH PERFORATIONS

Square Corners

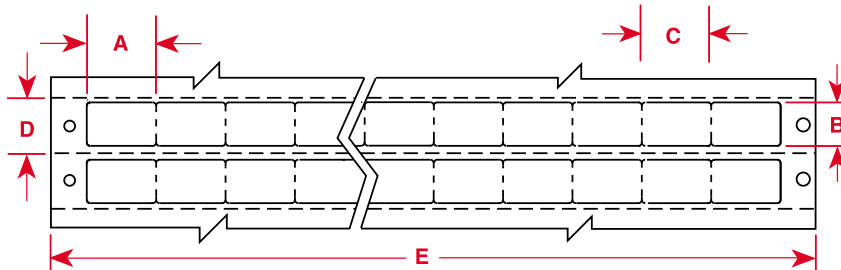


Part Number	Pieces Per Package	Material	Color	Labels Per Row	Label Width Inch (mm) A	Label Height Inch (mm) B	Horizontal Repeat Inch (mm) C	Vertical Repeat Inch (mm) D	Web Width Inch (mm) E
<b>0.300" Label Width — 6 or 8 lines per inch</b>									
DAT-106-652-10	10,000	Polyimide	Amber	16	0.300 (762)	0.300 (762)	0.300 (762)	0.500 (12.70)	5.800 (147.32)
DAT-107-658-10	10,000	Polyimide	Amber	16	0.300 (762)	0.300 (762)	0.300 (762)	0.500 (12.70)	5.800 (147.32)
DAT-108-619-10	10,000	Polyester	White	16	0.300 (762)	0.300 (762)	0.300 (762)	0.500 (12.70)	5.800 (147.32)
<b>0.800" Label Width — 6 lines per inch</b>									
DAT-101-652-10	10,000	Polyimide	Amber	10	0.800 (20.32)	0.200 (5.08)	0.800 (20.32)	0.330 (8.46)	9.000 (228.60)
DAT-102-619-10	10,000	Polyester	White	10	0.800 (20.32)	0.200 (5.08)	0.800 (20.32)	0.330 (8.46)	9.000 (228.60)

**Note:** Labels in chart are sorted in order by width, height, 3 digit material number (within part number), then die number (within part number).

► BUTT-CUT WITH PERFORATIONS

Rounded Corners

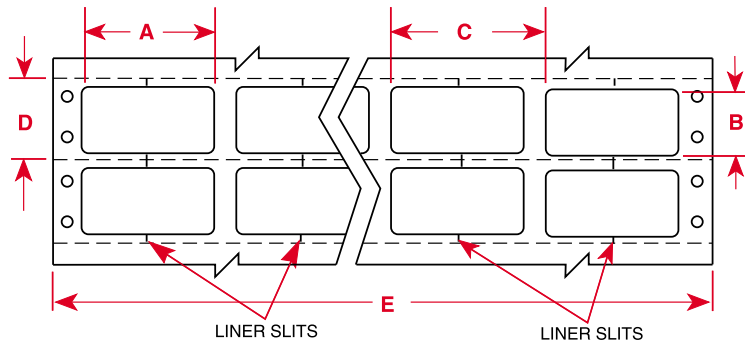


Part Number	Pieces Per Package	Material	Color	Labels Per Row	Label Width Inch (mm) A	Label Height Inch (mm) B	Horizontal Repeat Inch (mm) C	Vertical Repeat Inch (mm) D	Web Width Inch (mm) E
<b>0.250" Label Width — 8 lines per inch</b>									
DAT-172-652-10	10,000	Polyimide	Amber	20	0.250 (6.35)	0.250 (6.35)	0.250 (6.35)	0.500 (12.70)	6.000 (152.40)
DAT-173-619-10	10,000	Polyester	White	20	0.250 (6.35)	0.250 (6.35)	0.250 (6.35)	0.500 (12.70)	6.000 (152.40)
<b>0.800" Label Width — 8 lines per inch</b>									
DAT-103-652-10	10,000	Polyimide	Amber	10	0.800 (20.32)	0.500 (12.70)	0.800 (20.32)	0.625 (15.88)	9.000 (228.60)
DAT-104-619-10	10,000	Polyester	White	10	0.800 (20.32)	0.500 (12.70)	0.800 (20.32)	0.625 (15.88)	9.000 (228.60)
DAT-105-110-10	10,000	Paper	White	10	0.800 (20.32)	0.500 (12.70)	0.800 (20.32)	0.625 (15.88)	9.000 (228.60)

**Note:** Labels in chart are sorted in order by width, height, 3 digit material number (within part number), then die number (within part number).

## Label Index by Size

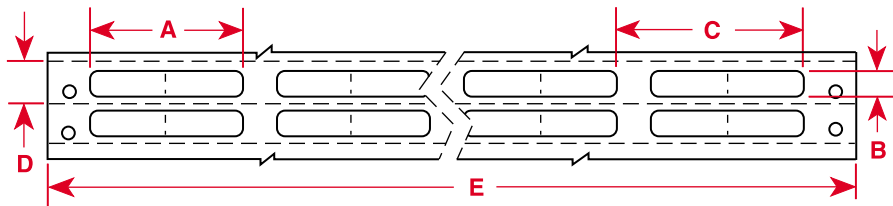
► **SLIT LINER**  
for easy removal



Part Number	Pieces Per Package	Material	Color	Labels Per Row	Label Width Inch (mm) A	Label Height Inch (mm) B	Horizontal Repeat Inch (mm) C	Vertical Repeat Inch (mm) D	Web Width Inch (mm) E
<b>1.500" Label Width — 6 or 8 lines per inch</b>									
BCDAT-12-619-10	10,000	Polyester	White	4	1.500 (38.10)	0.750 (19.05)	1.700 (43.18)	1.000 (25.40)	7.600 (193.04)
DAT-3-637-10	10,000	Polyvinylfluoride	White	4	1.500 (38.10)	0.750 (19.05)	1.700 (43.18)	1.000 (25.40)	7.600 (193.04)
DAT-4-637-10	10,000	Polyvinylfluoride	Yellow	4	1.500 (38.10)	0.750 (19.05)	1.700 (43.18)	1.000 (25.40)	7.600 (193.04)
DAT-48-693-10	10,000	Metallized Polyester	Silver	4	1.500 (38.10)	0.750 (19.05)	1.700 (43.18)	1.000 (25.40)	7.600 (193.04)
DAT-48-969-10	10,000	Metallized Polyester	Silver	4	1.500 (38.10)	0.750 (19.05)	1.700 (43.18)	1.000 (25.40)	7.600 (193.04)

**Note:** Labels in chart are sorted in order by width, height, 3 digit material number (within part number), then die number (within part number).

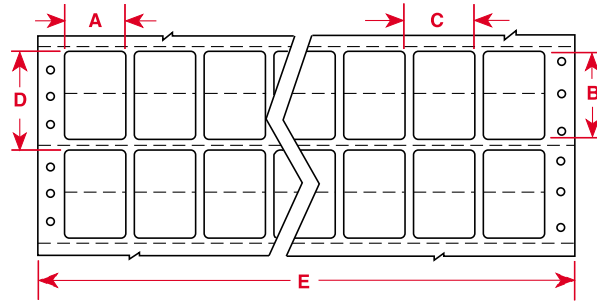
► **CENTER PERFORATION (VERTICAL)**



Part Number	Pieces Per Package	Material	Color	Labels Per Row	Label Width Inch (mm) A	Label Height Inch (mm) B	Horizontal Repeat Inch (mm) C	Vertical Repeat Inch (mm) D	Web Width Inch (mm) E
<b>1.500" Label Width — 6 lines per inch</b>									
DAT-28-121-10	10,000	Paper	White	4	1.500 (38.10)	0.250 (6.35)	1.800 (45.72)	0.330 (8.46)	7.900 (200.66)
DAT-29-502-10	10,000	Vinyl Cloth	White	4	1.500 (38.10)	0.250 (6.35)	1.800 (45.72)	0.330 (8.46)	7.900 (200.66)

**Note:** Labels in chart are sorted in order by width, height, 3 digit material number (within part number), then die number (within part number).

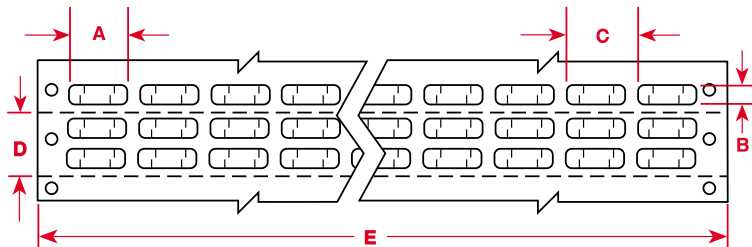
► CENTER PERFORATIONS (HORIZONTAL)



Part Number	Pieces Per Package	Material	Color	Labels Per Row	Label Width Inch (mm) A	Label Height Inch (mm) B	Horizontal Repeat Inch (mm) C	Vertical Repeat Inch (mm) D	Web Width Inch (mm) E
<b>1.000" Label Width — 6 or 8 lines per inch</b>									
DAT-87-632-10	10,000	Polyvinylfluoride	White	7	1.000 (25.40)	1.437 (36.50)	1.100 (27.94)	1.500 (38.10)	8.600 (218.44)

**Note:** Labels in chart are sorted in order by width, height, 3 digit material number (within part number), then die number (within part number).

► TAMPER-RESISTANT SLITS



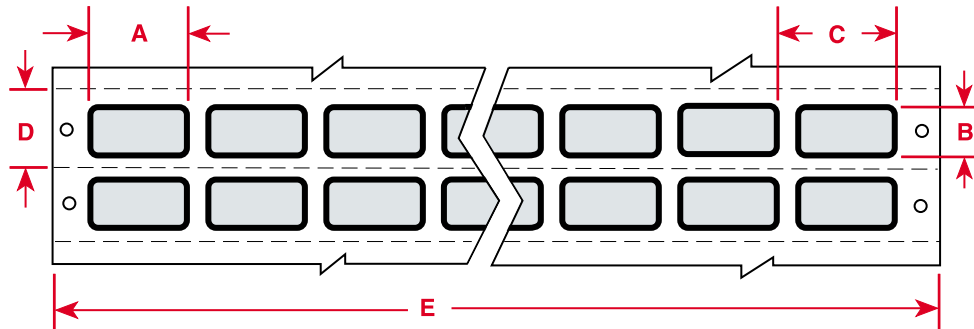
Part Number	Pieces Per Package	Material	Color	Labels Per Row	Label Width Inch (mm) A	Label Height Inch (mm) B	Horizontal Repeat Inch (mm) C	Vertical Repeat Inch (mm) D	Web Width Inch (mm) E
<b>0.650" Label Width — 8 lines per inch</b>									
DAT-90-619-10	10,000	Polyester	White	10	0.650 (16.51)	0.200 (5.08)	0.800 (20.32)	0.250 (6.35)	8.850 (224.80)
DAT-91-652-10	10,000	Polyimide	Amber	10	0.650 (16.51)	0.200 (5.08)	0.800 (20.32)	0.250 (6.35)	8.850 (224.80)
<b>0.750" Label Width — 6 lines per inch</b>									
DAT-92-619-10	10,000	Polyester	White	9	0.750 (19.05)	0.250 (6.35)	0.900 (22.86)	0.330 (8.46)	9.000 (228.60)
DAT-93-652-10	10,000	Polyimide	Amber	9	0.750 (19.05)	0.250 (6.35)	0.900 (22.86)	0.330 (8.46)	9.000 (228.60)
<b>0.900" Label Width — 6 lines per inch</b>									
DAT-94-652-10	10,000	Polyimide	Amber	8	0.900 (22.86)	0.250 (6.35)	1.000 (25.40)	0.330 (8.46)	8.900 (226.06)
DAT-95-619-10	10,000	Polyester	White	8	0.900 (22.86)	0.250 (6.35)	1.000 (25.40)	0.330 (8.46)	8.900 (226.06)

**Note:** Labels in chart are sorted in order by width, height, 3 digit material number (within part number), then die number (within part number).



## Label Index by Size

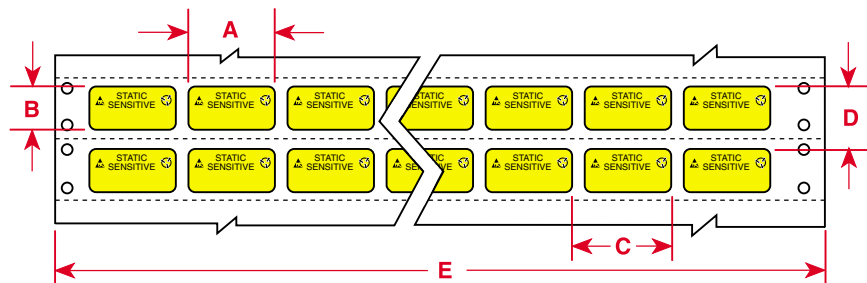
### ► 0.062" BLACK BORDER



Part Number	Pieces Per Package	Material	Color	Labels Per Row	Label Width Inch (mm) A	Label Height Inch (mm) B	Horizontal Repeat Inch (mm) C	Vertical Repeat Inch (mm) D	Web Width Inch (mm) E
<b>1.000" Label Width — 6 lines per inch</b>									
DAT-164-969-10	10,000	Polyester	Silver	7	1.000 (25.40)	0.500 (12.70)	1.100 (27.94)	0.670 (17.02)	8.600 (218.44)

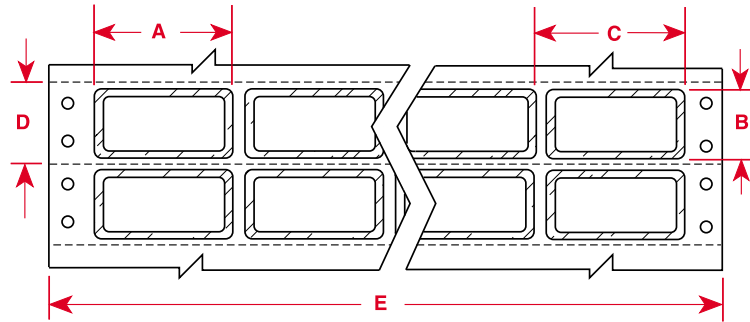
**Note:** Labels in chart are sorted in order by width, height, 3 digit material number (within part number), then die number (within part number).

### ► STATIC AWARENESS LABELS for EPROM marking



Part Number	Pieces Per Package	Material	Color	Printable Area Inch (mm)	Label Width Inch (mm) A	Label Height Inch (mm) B	Horizontal Repeat Inch (mm) C	Vertical Repeat Inch (mm) D	Web Width Inch (mm) E
<b>1.000" Label Width — 6 or 8 lines per inch</b>									
SLDAT-1-502-10	10,000	Vinyl Cloth	Black on Yellow	1.000 x 0.312 (25.40 x 7.92)	1.00 (25.40)	0.500 (12.70)	1.100 (27.94)	0.670 (17.02)	8.600 (218.44)
SLDAT-1-619-10	10,000	Polyester	Black on Yellow/White	1.000 x 0.312 (25.40 x 7.92)	1.00 (25.40)	0.500 (12.70)	1.100 (27.94)	0.670 (17.02)	8.600 (218.44)

**Note:** Labels in chart are sorted in order by width, height, 3 digit material number (within part number), then die number (within part number).



Clear polyester (B-966) overlamine extends 0.125" outside of label on each side.

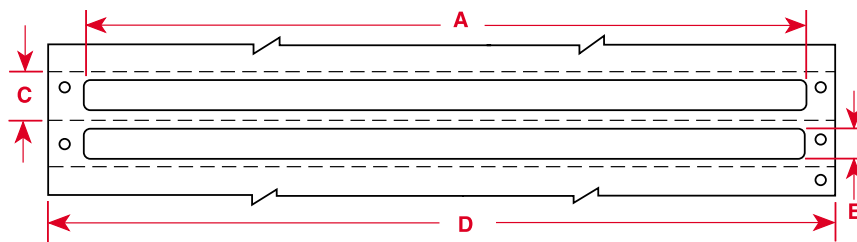
Part Number	Pieces Per Package	Material	Color	Labels Per Row	Label Width Inch (mm) A	Label Height Inch (mm) B	Horizontal Repeat Inch (mm) C	Vertical Repeat Inch (mm) D	Web Width Inch (mm) E
<b>1.000" Label Width — 6 or 8 lines per inch</b>									
PSL-1-609-5	5,000	Paper	White	6	1.000 (25.40)	0.500 (12.70)	1.400 (35.56)	1.000 (25.40)	9.250 (234.95)
PSL-1-619-5	5,000	Polyester	White	6	1.000 (25.40)	0.500 (12.70)	1.400 (35.56)	1.000 (25.40)	9.250 (234.95)
PSL-1-969-5	5,000	Metallized Polyester	Silver	6	1.000 (25.40)	0.500 (12.70)	1.400 (35.56)	1.000 (25.40)	9.250 (234.95)
<b>1.500" Label Width — 6 or 8 lines per inch</b>									
PSL-2-609-5	5,000	Paper	White	4	1.500 (38.10)	0.750 (19.05)	1.900 (48.26)	1.500 (38.10)	8.450 (214.63)
PSL-2-619-5	5,000	Polyester	White	4	1.500 (38.10)	0.750 (19.05)	1.900 (48.26)	1.500 (38.10)	8.450 (214.63)
PSL-2-969-5	5,000	Metallized Polyester	Silver	4	1.500 (38.10)	0.750 (19.05)	1.900 (48.26)	1.500 (38.10)	8.450 (214.63)
<b>2.000" Label Width — 6 or 8 lines per inch</b>									
PSL-3-619-5	5,000	Polyester	White	3	2.000 (50.80)	1.000 (25.40)	2.400 (60.96)	1.500 (38.10)	8.050 (204.47)
PSL-3-969-5	5,000	Metallized Polyester	Silver	3	2.000 (50.80)	1.000 (25.40)	2.400 (60.96)	1.500 (38.10)	8.050 (204.47)

**Note:** Labels in chart are sorted in order by width, height, 3 digit material number (within part number), then die number (within part number).

\*This product is sold in Japan under the Overlamine Labels name and not under the PermaShield name.

## Terminal Block Markers by Size

### ▶ ONE-ACROSS

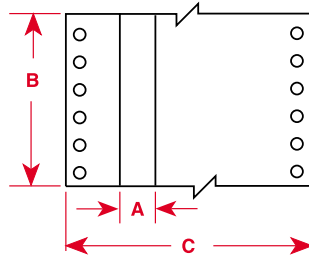


Part Number	Pieces Per Package	Material	Color	Labels Per Row	Label Width Inch (mm) A	Label Height Inch (mm) B	Vertical Repeat Inch (mm) C	Web Width Inch (mm) D
<b>6.00" Label Width — 6 or 8 lines per inch</b>								
BCDAT-7-609-2.5	2,500	Paper	White	1	6.000 (152.40)	3.937 (100.00)	4.000 (101.60)	7.000 (177.80)

**Note:** Labels in chart are sorted in order by width, height, 3 digit material number (within part number), then die number (within part number).

# Terminal Block Markers by Size

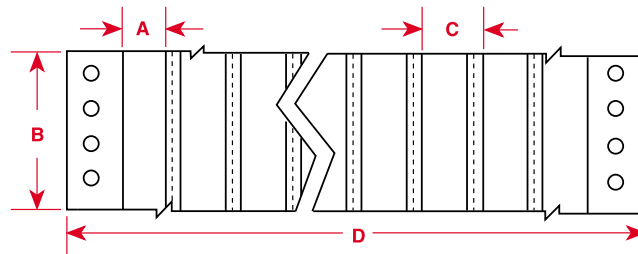
## ▶ CONTINUOUS STRIP / ONE-ACROSS



Part Number	Inches Per Package	Material	Color	Strips Per Row	Label Width Inch (mm) A	Label Height Inch (mm) B	Web Width Inch (mm) C
<b>0.312" Label Width — 6 or 8 lines per inch</b>							
DAT-157-502-2	2,000"	Vinyl Cloth	White	1	0.312 (7.92)	Continuous	3.500 (88.90)
<b>0.375" Label Width — 6 or 8 lines per inch</b>							
DAT-158-502-2	2,000"	Vinyl Cloth	White	1	0.375 (9.53)	Continuous	3.500 (88.90)

**Note:** Labels in chart are sorted in order by width, height, 3 digit material number (within part number), then die number (within part number).

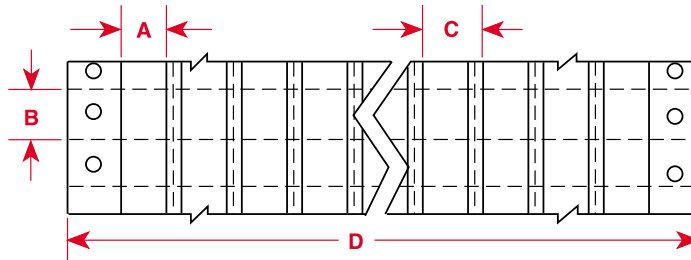
## ▶ CONTINUOUS STRIP / MULTIPLE ACROSS



Part Number	Inches Per Package	Material	Color	Labels Per Row	Label Width Inch (mm) A	Label Height Feet (m) B	Horizontal Repeat Inch (mm) C	Web Width Inch (mm) D
<b>0.375" Label Width — 6 or 8 lines per inch</b>								
DAT-100-502-7	7,000"	Vinyl Cloth	White	8	0.375 (9.53)	165 ft (50.30 m)	0.500 (12.70)	5.000 (127.00)

**Note:** Labels in chart are sorted in order by width, height, 3 digit material number (within part number), then die number (within part number).

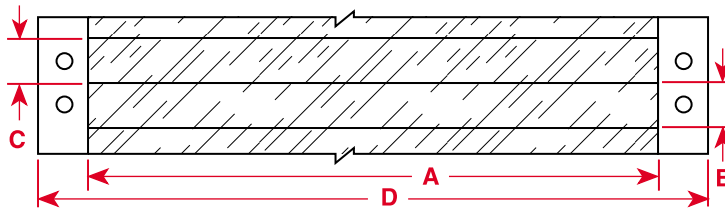
## ▶ CONTINUOUS STRIP / PERFORATED



Part Number	Inches Per Package	Material	Color	Labels Per Row	Label Width Inch (mm) A	Label Height Feet (m) B	Horizontal Repeat Inch (mm) C	Web Width Inch (mm) D
<b>0.375" Label Width — 8 lines per inch</b>								
DAT-168-619-2	2,000"	Polyester	White	1	0.375 (9.53)	0.200 (5.08)	NA	3.500 (88.90)

**Note:** Labels in chart are sorted in order by width, height, 3 digit material number (within part number), then die number (within part number).

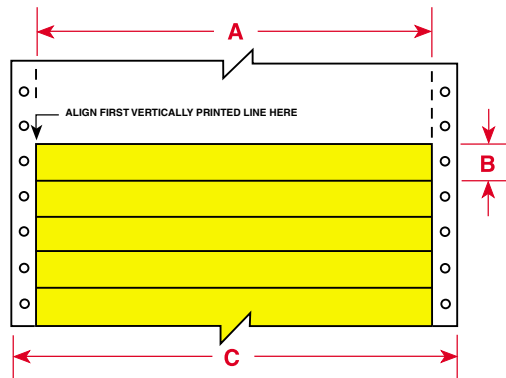
► BUTT-CUT TRANSLUCENT



Part Number	Pieces Per Package	Material	Color	Labels Per Row	Label Width Inch (mm) A	Label Height Inch (mm) B	Vertical Repeat Inch (mm) C	Web Width Inch (mm) D
<b>7.500" Label Width — 6 or 8 lines per inch</b>								
DAT-169-621-2.5	2,500	Polyester	Clear	1	7.500 (190.50)	0.500 (12.70)	0.500 (12.70)	8.620 (218.95)

**Note:** Labels in chart are sorted in order by width, height, 3 digit material number (within part number), then die number (within part number).

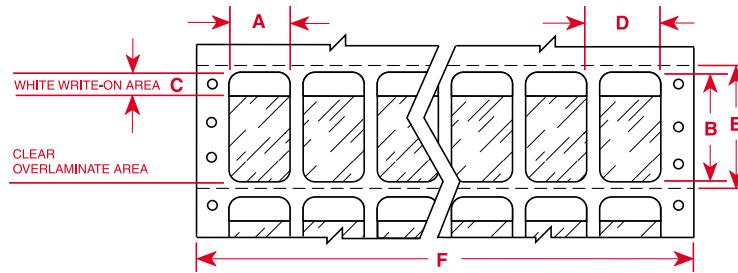
► PREPRINTED / PERFORATED



Part Number	Pieces Per Package	Material	Color	Strips Per Row	Strip Width Inch (mm) A	Strip Height Inch (mm) B	Web Width Inch (mm) C
<b>7.900" Label Width — 6 or 8 lines per inch</b>							
DAT-177-124	150	Paper	White	1	7.900 (200.66)	0.475 (12.07)	8.875 (225.43)
DAT-177-124-BL	150	Paper	Blue	1	7.900 (200.66)	0.475 (12.07)	8.875 (225.43)
DAT-177-124-BR	150	Paper	Brown	1	7.900 (200.66)	0.475 (12.07)	8.875 (225.43)
DAT-177-124-GR	150	Paper	Green	1	7.900 (200.66)	0.475 (12.07)	8.875 (225.43)
DAT-177-124-GY	150	Paper	Gray	1	7.900 (200.66)	0.475 (12.07)	8.875 (225.43)
DAT-177-124-OR	150	Paper	Orange	1	7.900 (200.66)	0.475 (12.07)	8.875 (225.43)
DAT-177-124-PL	150	Paper	Purple	1	7.900 (200.66)	0.475 (12.07)	8.875 (225.43)
DAT-177-124-RD	150	Paper	Red	1	7.900 (200.66)	0.475 (12.07)	8.875 (225.43)
DAT-177-124-YL	150	Paper	Yellow	1	7.900 (200.66)	0.475 (12.07)	8.875 (225.43)

**Note:** Labels in chart are sorted in order by width, height, 3 digit material number (within part number), then die number (within part number).

# Self-Laminating Wire and Cable Markers by Size



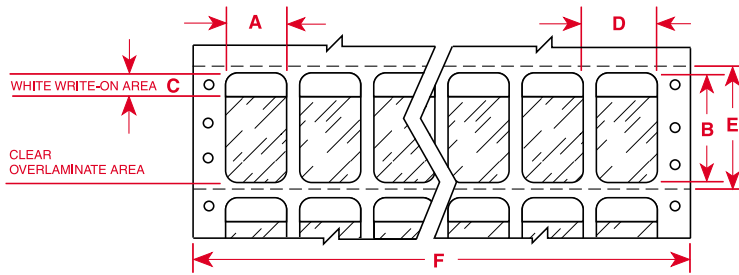
Part Number	Pieces Per Package	Material	Labels Per Row	Label Width Inch (mm) A	Label Height Inch (mm) B	Write-On Height Inch (mm) C	Horizontal Repeat Inch (mm) D	Vertical Repeat Inch (mm) E	Web Width Inch (mm) F
<b>0.500" Label Width — 6 or 8 lines per inch</b>									
DAT-30-292*-1,-10	1,000/10,000	Vinyl	14	0.500 (12.70)	0.750 (19.05)	0.375 (9.53)	0.600 (15.24)	1.000 (25.40)	9.300 (236.22)
DAT-66-292-1,-10	1,000/10,000	Vinyl	12	0.500 (12.70)	0.750 (19.05)	0.375 (9.53)	0.600 (15.24)	1.000 (25.40)	8.100 (205.74)
DAT-71-642-10	10,000	Polyvinylfluoride	12	0.500 (12.70)	0.750 (19.05)	0.375 (9.53)	0.600 (15.24)	1.000 (25.40)	8.100 (205.74)
DAT-55-642*-10	10,000	Polyvinylfluoride	14	0.500 (12.70)	0.750 (19.05)	0.375 (9.53)	0.600 (15.24)	1.000 (25.40)	9.300 (236.22)
<b>0.750" Label Width — 6 or 8 lines per inch</b>									
DAT-36-292-1,-10	1,000/10,000	Vinyl	9	0.750 (19.05)	1.750 (44.45)	0.500 (12.70)	0.900 (22.86)	2.000 (50.80)	9.000 (228.60)
<b>0.800" Label Width — 6 or 8 lines per inch</b>									
DAT-7-292-1,-10	1,000/10,000	Vinyl	6	0.800 (20.32)	1.437 (36.50)	0.500 (12.70)	0.900 (22.86)	1.500 (38.10)	6.300 (160.00)
DAT-52-642-10	10,000	Polyvinylfluoride	6	0.800 (20.32)	1.437 (36.50)	0.500 (12.70)	0.900 (22.86)	1.500 (38.10)	6.300 (160.00)
<b>1.000" Label Width — 6 or 8 lines per inch</b>									
DAT-185-292-1,-2.5	1,000/2,500	Vinyl	7	1.000 (25.40)	2.500 (63.50)	0.750 (19.05)	1.100 (27.94)	3.000 (76.20)	8.600 (218.44)
DAT-187-292-1,-2.5	1,000/2,500	Vinyl	7	1.000 (25.40)	4.000 (101.60)	1.000 (25.40)	1.100 (27.94)	4.500 (114.30)	8.600 (218.44)
DAT-41-292*-1,-2.5	1,000/2,500	Vinyl	8	1.000 (25.40)	5.937 (150.80)	1.500 (38.10)	1.100 (27.94)	6.000 (152.40)	9.500 (241.30)
DAT-69-292-1,-2.5	1,000/2,500	Vinyl	7	1.000 (25.40)	5.937 (150.80)	1.500 (38.10)	1.100 (27.94)	6.000 (152.40)	8.400 (213.36)
DAT-69-292-BL**	2,500	Vinyl	7	1.000 (25.40)	5.937 (150.80)	1.500 (38.10)	1.100 (27.94)	6.000 (152.40)	8.400 (213.36)
DAT-69-292-BR**	2,500	Vinyl	7	1.000 (25.40)	5.937 (150.80)	1.500 (38.10)	1.100 (27.94)	6.000 (152.40)	8.400 (213.36)
DAT-69-292-GR**	2,500	Vinyl	7	1.000 (25.40)	5.937 (150.80)	1.500 (38.10)	1.100 (27.94)	6.000 (152.40)	8.400 (213.36)
DAT-69-292-GY**	2,500	Vinyl	7	1.000 (25.40)	5.937 (150.80)	1.500 (38.10)	1.100 (27.94)	6.000 (152.40)	8.400 (213.36)
DAT-69-292-OR**	2,500	Vinyl	7	1.000 (25.40)	5.937 (150.80)	1.500 (38.10)	1.100 (27.94)	6.000 (152.40)	8.400 (213.36)
DAT-69-292-PL**	2,500	Vinyl	7	1.000 (25.40)	5.937 (150.80)	1.500 (38.10)	1.100 (27.94)	6.000 (152.40)	8.400 (213.36)
DAT-69-292-RD**	2,500	Vinyl	7	1.000 (25.40)	5.937 (150.80)	1.500 (38.10)	1.100 (27.94)	6.000 (152.40)	8.400 (213.36)
DAT-69-292-YL**	2,500	Vinyl	7	1.000 (25.40)	5.937 (150.80)	1.500 (38.10)	1.100 (27.94)	6.000 (152.40)	8.400 (213.36)
DAT-42-292*-1,-2.5	1,000/2,500	Vinyl	8	1.000 (25.40)	7.437 (188.90)	1.500 (38.10)	1.100 (27.94)	7.500 (190.50)	9.500 (241.30)
DAT-70-292-1,-2.5	1,000/2,500	Vinyl	7	1.000 (25.40)	7.437 (188.90)	1.500 (38.10)	1.100 (27.94)	7.500 (190.50)	8.400 (213.36)
<b>1.500" Label Width — 6 or 8 lines per inch</b>									
DAT-186-292-1,-2.5	1,000/2,500	Vinyl	4	1.500 (38.10)	2.500 (63.50)	0.750 (19.05)	1.600 (40.64)	3.000 (76.20)	7.300 (185.42)
DAT-188-292-1,-2.5	1,000/2,500	Vinyl	4	1.500 (38.10)	4.000 (101.60)	1.000 (25.40)	1.600 (40.64)	4.500 (114.30)	7.300 (185.42)
<b>1.900" Label Width — 6 or 8 lines per inch</b>									
DAT-8-292*-1,-2.5	1,000/2,500	Vinyl	4	1.900 (48.26)	3.187 (80.95)	0.750 (19.05)	2.000 (50.80)	3.500 (88.90)	9.500 (241.30)
DAT-63-292-1,-2.5	1,000/2,500	Vinyl	3	1.900 (48.26)	3.187 (80.95)	0.750 (19.05)	2.000 (50.80)	3.500 (88.90)	7.500 (190.50)

\*Size does not fit narrow carriage (80-column) printers. See p. 158 for identical narrow carriage labels.

\*\*BL=blue, BR=brown, GR=green, GY=grey, OR=orange, PL=purple, RD=red, YL=yellow.  
Standard product lead time of 10 working days.

Note: Labels in chart are sorted in order by width, height, 3 digit material number (within part number), then die number (within part number).

Self-Laminating Wire and Cable Markers by Size



Part Number	Pieces Per Package	Material	Labels Per Row	Label Width Inch (mm) A	Label Height Inch (mm) B	Write-On Height Inch (mm) C	Horizontal Repeat Inch (mm) D	Vertical Repeat Inch (mm) E	Web Width Inch (mm) F
<b>2.000" Label Width — 6 or 8 lines per inch</b>									
DAT-9-292*-1,-2.5	1000/2500	Vinyl	6	2.000 (50.80)	5.937 (150.80)	1.500 (38.10)	2.100 (53.34)	6.000 (152.40)	13.500 (342.90)
DAT-75-292-1,-2.5	1,000/2,500	Vinyl	3	2.000 (50.80)	5.937 (150.80)	1.500 (38.10)	2.100 (53.34)	6.000 (152.40)	7.000 (177.80)
DAT-75-292-BL**	2,500	Vinyl	3	2.000 (50.80)	5.937 (150.80)	1.500 (38.10)	2.100 (53.34)	6.000 (152.40)	7.000 (177.80)
DAT-75-292-BR**	2,500	Vinyl	3	2.000 (50.80)	5.937 (150.80)	1.500 (38.10)	2.100 (53.34)	6.000 (152.40)	7.000 (177.80)
DAT-75-292-GR**	2,500	Vinyl	3	2.000 (50.80)	5.937 (150.80)	1.500 (38.10)	2.100 (53.34)	6.000 (152.40)	7.000 (177.80)
DAT-75-292-GY**	2,500	Vinyl	3	2.000 (50.80)	5.937 (150.80)	1.500 (38.10)	2.100 (53.34)	6.000 (152.40)	7.000 (177.80)
DAT-75-292-OR**	2,500	Vinyl	3	2.000 (50.80)	5.937 (150.80)	1.500 (38.10)	2.100 (53.34)	6.000 (152.40)	7.000 (177.80)
DAT-75-292-PL**	2,500	Vinyl	3	2.000 (50.80)	5.937 (150.80)	1.500 (38.10)	2.100 (53.34)	6.000 (152.40)	7.000 (177.80)
DAT-75-292-RD**	2,500	Vinyl	3	2.000 (50.80)	5.937 (150.80)	1.500 (38.10)	2.100 (53.34)	6.000 (152.40)	7.000 (177.80)
DAT-75-292-YL**	2,500	Vinyl	3	2.000 (50.80)	5.937 (150.80)	1.500 (38.10)	2.100 (53.34)	6.000 (152.40)	7.000 (177.80)
DAT-14-292*-1,-2.5	1,000/2,500	Vinyl	4	2.000 (50.80)	7.437 (188.90)	1.500 (38.10)	2.200 (55.88)	7.500 (190.50)	9.400 (238.76)
DAT-65-292-1,-2.5	1,000/2,500	Vinyl	3	2.000 (50.80)	7.437 (188.90)	1.500 (38.10)	2.100 (53.34)	7.500 (190.50)	7.200 (182.88)
DAT-159-292-1,-2.5	1,000/2,500	Vinyl	3	2.000 (50.80)	8.437 (214.30)	1.500 (38.10)	2.100 (53.34)	8.500 (215.90)	7.200 (182.88)
DAT-159-292-BL**	2,500	Vinyl	3	2.000 (50.80)	8.437 (214.30)	1.500 (38.10)	2.100 (53.34)	8.500 (215.90)	7.200 (182.88)
DAT-159-292-BR**	2,500	Vinyl	3	2.000 (50.80)	8.437 (214.30)	1.500 (38.10)	2.100 (53.34)	8.500 (215.90)	7.200 (182.88)
DAT-159-292-GR**	2,500	Vinyl	3	2.000 (50.80)	8.437 (214.30)	1.500 (38.10)	2.100 (53.34)	8.500 (215.90)	7.200 (182.88)
DAT-159-292-GY**	2,500	Vinyl	3	2.000 (50.80)	8.437 (214.30)	1.500 (38.10)	2.100 (53.34)	8.500 (215.90)	7.200 (182.88)
DAT-159-292-OR**	2,500	Vinyl	3	2.000 (50.80)	8.437 (214.30)	1.500 (38.10)	2.100 (53.34)	8.500 (215.90)	7.200 (182.88)
DAT-159-292-PL**	2,500	Vinyl	3	2.000 (50.80)	8.437 (214.30)	1.500 (38.10)	2.100 (53.34)	8.500 (215.90)	7.200 (182.88)
DAT-159-292-RD**	2,500	Vinyl	3	2.000 (50.80)	8.437 (214.30)	1.500 (38.10)	2.100 (53.34)	8.500 (215.90)	7.200 (182.88)
DAT-159-292-YL**	2,500	Vinyl	3	2.000 (50.80)	8.437 (214.30)	1.500 (38.10)	2.100 (53.34)	8.500 (215.90)	7.200 (182.88)

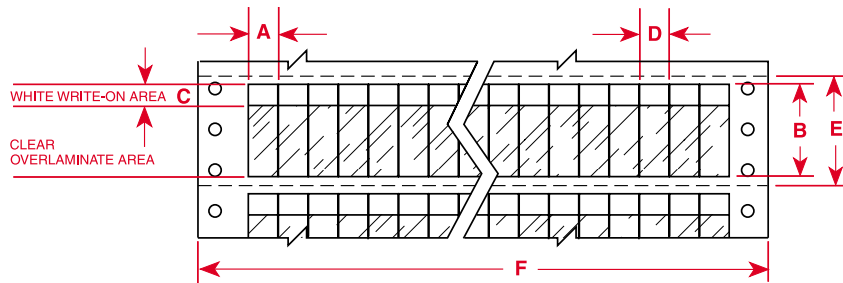
\*Size does not fit narrow carriage (80-column) printers. See p. 158 for identical narrow carriage labels.

\*\*BL=blue, BR=brown, GR=green, GY=grey, OR=orange, PL=purple, RD=red, YL=yellow.  
Standard product lead time of 10 working days.

Note: Labels in chart are sorted in order by width, height, 3 digit material number (within part number), then die number (within part number).

# Self-Laminating Wire and Cable Markers by Size

► BUTT-CUT



Part Number	Pieces Per Package	Material	Labels Per Row	Label Width Inch (mm) A	Label Height Inch (mm) B	Write-On Height Inch (mm) C	Horizontal Repeat Inch (mm) D	Vertical Repeat Inch (mm) E	Web Width Inch (mm) F
<b>0.300" Label Width — 6 or 8 lines per inch</b>									
DAT-139-292-1,-10	1,000/10,000	Vinyl	16	0.300 (7.62)	0.75 (19.05)	0.375 (9.53)	0.300 (7.62)	1.000 (25.40)	5.800 (147.32)
DAT-142-292-1,-10	1,000/10,000	Vinyl	16	0.300 (7.62)	0.937 (23.80)	0.375 (9.53)	0.300 (7.62)	1.000 (25.40)	5.800 (147.32)
<b>0.500" Label Width — 6 or 8 lines per inch</b>									
DAT-145-292-1,-10	1,000/10,000	Vinyl	16	0.500 (12.70)	0.937 (23.80)	0.375 (9.53)	0.500 (12.70)	1.000 (25.40)	9.000 (228.60)
DAT-33-292-1,-10	1,000/10,000	Vinyl	16	0.500 (12.70)	1.437 (36.50)	0.500 (12.70)	0.500 (12.70)	1.500 (38.10)	9.000 (228.60)
DAT-53-642-1,-10	1,000/10,000	Polyvinylfluoride	16	0.500 (12.70)	1.437 (36.50)	0.500 (12.70)	0.500 (12.70)	1.500 (38.10)	9.000 (228.60)
SLSH-0515	1,664	Vinyl	16	0.500 (12.70)	1.437 (36.50)	0.500 (12.70)	0.500 (12.70)	1.500 (38.10)	9.000 (228.60)
<b>0.800" Label Width — 6 or 8 lines per inch</b>									
DAT-148-292-1,-10	1,000/10,000	Vinyl	10	0.800 (20.32)	0.937 (23.80)	0.375 (9.53)	0.800 (20.32)	1.000 (25.40)	9.000 (228.60)
<b>1.000" Label Width — 6 or 8 lines per inch</b>									
DAT-85-292-1,-10	1,000/10,000	Vinyl	8	1.000 (25.40)	0.750 (19.05)	0.375 (9.53)	1.000 (25.40)	1.000 (25.40)	9.000 (228.60)
DAT-85-292-BL**	2,500	Vinyl	8	1.000 (25.40)	0.750 (19.05)	0.375 (9.53)	1.000 (25.40)	1.000 (25.40)	9.000 (228.60)
DAT-85-292-BR**	2,500	Vinyl	8	1.000 (25.40)	0.750 (19.05)	0.375 (9.53)	1.000 (25.40)	1.000 (25.40)	9.000 (228.60)
DAT-85-292-GR**	2,500	Vinyl	8	1.000 (25.40)	0.750 (19.05)	0.375 (9.53)	1.000 (25.40)	1.000 (25.40)	9.000 (228.60)
DAT-85-292-GY**	2,500	Vinyl	8	1.000 (25.40)	0.750 (19.05)	0.375 (9.53)	1.000 (25.40)	1.000 (25.40)	9.000 (228.60)
DAT-85-292-OR**	2,500	Vinyl	8	1.000 (25.40)	0.750 (19.05)	0.375 (9.53)	1.000 (25.40)	1.000 (25.40)	9.000 (228.60)
DAT-85-292-PL**	2,500	Vinyl	8	1.000 (25.40)	0.750 (19.05)	0.375 (9.53)	1.000 (25.40)	1.000 (25.40)	9.000 (228.60)
DAT-85-292-RD**	2,500	Vinyl	8	1.000 (25.40)	0.750 (19.05)	0.375 (9.53)	1.000 (25.40)	1.000 (25.40)	9.000 (228.60)
DAT-85-292-YL**	2,500	Vinyl	8	1.000 (25.40)	0.750 (19.05)	0.375 (9.53)	1.000 (25.40)	1.000 (25.40)	9.000 (228.60)
DAT-151-292-1,-10	1,000/10,000	Vinyl	8	1.000 (25.40)	0.937 (23.80)	0.375 (9.53)	1.000 (25.40)	1.000 (25.40)	9.000 (228.60)
DAT-34-292-1,-10	1,000/10,000	Vinyl	8	1.000 (25.40)	1.437 (36.50)	0.500 (12.70)	1.000 (25.40)	1.500 (38.10)	9.000 (228.60)
DAT-34-292-BL**	2,500	Vinyl	8	1.000 (25.40)	1.437 (36.50)	0.500 (12.70)	1.000 (25.40)	1.500 (38.10)	9.000 (228.60)
DAT-34-292-BR**	2,500	Vinyl	8	1.000 (25.40)	1.437 (36.50)	0.500 (12.70)	1.000 (25.40)	1.500 (38.10)	9.000 (228.60)
DAT-34-292-GR**	2,500	Vinyl	8	1.000 (25.40)	1.437 (36.50)	0.500 (12.70)	1.000 (25.40)	1.500 (38.10)	9.000 (228.60)
DAT-34-292-GY**	2,500	Vinyl	8	1.000 (25.40)	1.437 (36.50)	0.500 (12.70)	1.000 (25.40)	1.500 (38.10)	9.000 (228.60)
DAT-34-292-OR**	2,500	Vinyl	8	1.000 (25.40)	1.437 (36.50)	0.500 (12.70)	1.000 (25.40)	1.500 (38.10)	9.000 (228.60)
DAT-34-292-PL**	2,500	Vinyl	8	1.000 (25.40)	1.437 (36.50)	0.500 (12.70)	1.000 (25.40)	1.500 (38.10)	9.000 (228.60)
DAT-34-292-RD**	2,500	Vinyl	8	1.000 (25.40)	1.437 (36.50)	0.500 (12.70)	1.000 (25.40)	1.500 (38.10)	9.000 (228.60)
DAT-34-292-YL**	2,500	Vinyl	8	1.000 (25.40)	1.437 (36.50)	0.500 (12.70)	1.000 (25.40)	1.500 (38.10)	9.000 (228.60)
DAT-54-642-10	10,000	Polyvinylfluoride	8	1.000 (25.40)	1.437 (36.50)	0.500 (12.70)	1.000 (25.40)	1.500 (38.10)	9.000 (228.60)
SLSH-1015	832	Vinyl	8	1.000 (25.40)	1.437 (36.50)	0.500 (12.70)	1.000 (25.40)	1.500 (38.10)	9.000 (228.60)
DAT-37-292-1,-10	1,000/10,000	Vinyl	8	1.000 (25.40)	2.250 (57.15)	0.750 (19.05)	1.000 (25.40)	2.500 (63.50)	9.000 (228.60)
DAT-37-292-BL**	2,500	Vinyl	8	1.000 (25.40)	2.250 (57.15)	0.750 (19.05)	1.000 (25.40)	2.500 (63.50)	9.000 (228.60)
DAT-37-292-BR**	2,500	Vinyl	8	1.000 (25.40)	2.250 (57.15)	0.750 (19.05)	1.000 (25.40)	2.500 (63.50)	9.000 (228.60)
DAT-37-292-GR**	2,500	Vinyl	8	1.000 (25.40)	2.250 (57.15)	0.750 (19.05)	1.000 (25.40)	2.500 (63.50)	9.000 (228.60)
DAT-37-292-GY**	2,500	Vinyl	8	1.000 (25.40)	2.250 (57.15)	0.750 (19.05)	1.000 (25.40)	2.500 (63.50)	9.000 (228.60)
DAT-37-292-OR**	2,500	Vinyl	8	1.000 (25.40)	2.250 (57.15)	0.750 (19.05)	1.000 (25.40)	2.500 (63.50)	9.000 (228.60)
DAT-37-292-PL**	2,500	Vinyl	8	1.000 (25.40)	2.250 (57.15)	0.750 (19.05)	1.000 (25.40)	2.500 (63.50)	9.000 (228.60)
DAT-37-292-RD**	2,500	Vinyl	8	1.000 (25.40)	2.250 (57.15)	0.750 (19.05)	1.000 (25.40)	2.500 (63.50)	9.000 (228.60)
DAT-37-292-YL**	2,500	Vinyl	8	1.000 (25.40)	2.250 (57.15)	0.750 (19.05)	1.000 (25.40)	2.500 (63.50)	9.000 (228.60)
SLSH-10225	608	Vinyl	8	1.000 (25.40)	2.250 (57.15)	0.750 (19.05)	1.000 (25.40)	2.500 (63.50)	9.000 (228.60)

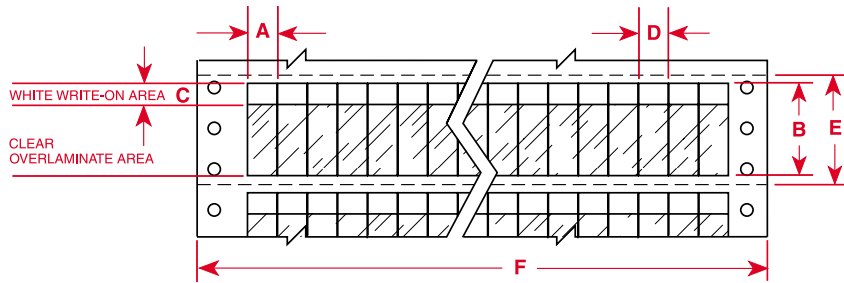
\*\*BL=blue, BR=brown, GR=green, GY=grey, OR=orange, PL=purple, RD=red, YL=yellow.  
Standard product lead time of 10 working days.

Note: Labels in chart are sorted in order by width, height, 3 digit material number (within part number), then die number (within part number).

MARKERS INDEX BY SIZE DOT MATRIX LABELS

Self-Laminating Wire and Cable Markers by Size

► BUTT-CUT



Part Number	Pieces Per Package	Material	Labels Per Row	Label Width Inch (mm) A	Label Height Inch (mm) B	Write-On Height Inch (mm) C	Horizontal Repeat Inch (mm) D	Vertical Repeat Inch (mm) E	Web Width Inch (mm) F
<b>1.000" Label Width — 6 or 8 lines per inch (Cont.)</b>									
DAT-39-292-1,-2.5	1,000/2,500	Vinyl	8	1.000 (25.40)	3.750 (95.25)	1.000 (25.40)	1.000 (25.40)	4.000 (101.60)	9.000 (228.60)
DAT-39-292-BL**	2,500	Vinyl	8	1.000 (25.40)	3.750 (95.25)	1.000 (25.40)	1.000 (25.40)	4.000 (101.60)	9.000 (228.60)
DAT-39-292-BR**	2,500	Vinyl	8	1.000 (25.40)	3.750 (95.25)	1.000 (25.40)	1.000 (25.40)	4.000 (101.60)	9.000 (228.60)
DAT-39-292-GR**	2,500	Vinyl	8	1.000 (25.40)	3.750 (95.25)	1.000 (25.40)	1.000 (25.40)	4.000 (101.60)	9.000 (228.60)
DAT-39-292-GY**	2,500	Vinyl	8	1.000 (25.40)	3.750 (95.25)	1.000 (25.40)	1.000 (25.40)	4.000 (101.60)	9.000 (228.60)
DAT-39-292-OR**	2,500	Vinyl	8	1.000 (25.40)	3.750 (95.25)	1.000 (25.40)	1.000 (25.40)	4.000 (101.60)	9.000 (228.60)
DAT-39-292-PL**	2,500	Vinyl	8	1.000 (25.40)	3.750 (95.25)	1.000 (25.40)	1.000 (25.40)	4.000 (101.60)	9.000 (228.60)
DAT-39-292-RD**	2,500	Vinyl	8	1.000 (25.40)	3.750 (95.25)	1.000 (25.40)	1.000 (25.40)	4.000 (101.60)	9.000 (228.60)
DAT-39-292-YL**	2,500	Vinyl	8	1.000 (25.40)	3.750 (95.25)	1.000 (25.40)	1.000 (25.40)	4.000 (101.60)	9.000 (228.60)
SLSH-10375	408	Vinyl	8	1.000 (25.40)	3.750 (95.25)	1.000 (25.40)	1.000 (25.40)	4.000 (101.60)	9.000 (228.60)
<b>2.000" Label Width — 6 or 8 lines per inch</b>									
DAT-35-292-1,-10	1,000/10,000	Vinyl	4	2.000 (50.80)	1.437 (36.50)	0.500 (12.70)	2.000 (50.80)	1.500 (38.10)	9.000 (228.60)
SLSH-2015	416	Vinyl	4	2.000 (50.80)	1.437 (36.50)	0.500 (12.70)	2.000 (50.80)	1.500 (38.10)	9.000 (228.60)
DAT-38-292-1,-2.5	1,000/2,500	Vinyl	4	2.000 (50.80)	2.250 (57.15)	0.750 (19.05)	2.000 (50.80)	2.500 (63.50)	9.000 (228.60)
DAT-38-292-BL**	2,500	Vinyl	4	2.000 (50.80)	2.250 (57.15)	0.750 (19.05)	2.000 (50.80)	2.500 (63.50)	9.000 (228.60)
DAT-38-292-BR**	2,500	Vinyl	4	2.000 (50.80)	2.250 (57.15)	0.750 (19.05)	2.000 (50.80)	2.500 (63.50)	9.000 (228.60)
DAT-38-292-GR**	2,500	Vinyl	4	2.000 (50.80)	2.250 (57.15)	0.750 (19.05)	2.000 (50.80)	2.500 (63.50)	9.000 (228.60)
DAT-38-292-GY**	2,500	Vinyl	4	2.000 (50.80)	2.250 (57.15)	0.750 (19.05)	2.000 (50.80)	2.500 (63.50)	9.000 (228.60)
DAT-38-292-OR**	2,500	Vinyl	4	2.000 (50.80)	2.250 (57.15)	0.750 (19.05)	2.000 (50.80)	2.500 (63.50)	9.000 (228.60)
DAT-38-292-PL**	2,500	Vinyl	4	2.000 (50.80)	2.250 (57.15)	0.750 (19.05)	2.000 (50.80)	2.500 (63.50)	9.000 (228.60)
DAT-38-292-RD**	2,500	Vinyl	4	2.000 (50.80)	2.250 (57.15)	0.750 (19.05)	2.000 (50.80)	2.500 (63.50)	9.000 (228.60)
DAT-38-292-YL**	2,500	Vinyl	4	2.000 (50.80)	2.250 (57.15)	0.750 (19.05)	2.000 (50.80)	2.500 (63.50)	9.000 (228.60)
SLSH-20225	304	Vinyl	4	2.000 (50.80)	2.250 (57.15)	0.750 (19.05)	2.000 (50.80)	2.500 (63.50)	9.000 (228.60)
DAT-40-292-1,-2.5	1,000/2,500	Vinyl	4	2.000 (50.80)	3.750 (95.25)	1.000 (25.40)	2.000 (50.80)	4.000 (101.60)	9.000 (228.60)
DAT-40-292-BL**	2,500	Vinyl	4	2.000 (50.80)	3.750 (95.25)	1.000 (25.40)	2.000 (50.80)	4.000 (101.60)	9.000 (228.60)
DAT-40-292-BR**	2,500	Vinyl	4	2.000 (50.80)	3.750 (95.25)	1.000 (25.40)	2.000 (50.80)	4.000 (101.60)	9.000 (228.60)
DAT-40-292-GR**	2,500	Vinyl	4	2.000 (50.80)	3.750 (95.25)	1.000 (25.40)	2.000 (50.80)	4.000 (101.60)	9.000 (228.60)
DAT-40-292-GY**	2,500	Vinyl	4	2.000 (50.80)	3.750 (95.25)	1.000 (25.40)	2.000 (50.80)	4.000 (101.60)	9.000 (228.60)
DAT-40-292-OR**	2,500	Vinyl	4	2.000 (50.80)	3.750 (95.25)	1.000 (25.40)	2.000 (50.80)	4.000 (101.60)	9.000 (228.60)
DAT-40-292-PL**	2,500	Vinyl	4	2.000 (50.80)	3.750 (95.25)	1.000 (25.40)	2.000 (50.80)	4.000 (101.60)	9.000 (228.60)
DAT-40-292-RD**	2,500	Vinyl	4	2.000 (50.80)	3.750 (95.25)	1.000 (25.40)	2.000 (50.80)	4.000 (101.60)	9.000 (228.60)
DAT-40-292-YL**	2,500	Vinyl	4	2.000 (50.80)	3.750 (95.25)	1.000 (25.40)	2.000 (50.80)	4.000 (101.60)	9.000 (228.60)
SLSH-20375	204	Vinyl	4	2.000 (50.80)	3.750 (95.25)	1.000 (25.40)	2.000 (50.80)	4.000 (101.60)	9.000 (228.60)

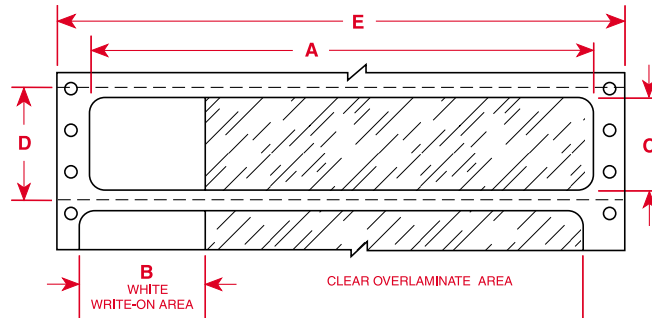
\*\*BL=blue, BR=brown, GR=green, GY=grey, OR=orange, PL=purple, RD=red, YL=yellow.  
Standard product lead time of 10 working days.

Note: Labels in chart are sorted in order by width, height, 3 digit material number (within part number), then die number (within part number).



# Self-Laminating Wire and Cable Markers by Size

## ► CABLE MARKERS



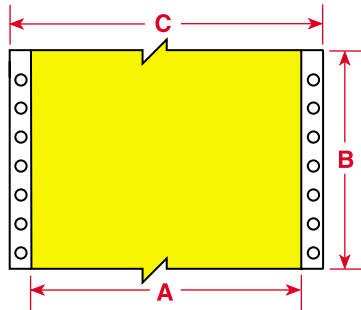
Part Number	Pieces Per Package	Material	Labels Per Row	Label Height Inch (mm) A	Write-On Height Inch (mm) B	Label Width Inch (mm) C	Vertical Repeat Inch (mm) D	Web Width Inch (mm) E
<b>8.500" Label Width — 6 or 8 lines per inch</b>								
DAT-162-292-1,-2.5	1,000/2,500	Vinyl	1	8.500 (215.90)	1.500 (38.10)	2.000 (50.80)	2.500 (63.50)	9.500 (241.30)

**Note:** Labels in chart are sorted in order by width, height, 3 digit material number (within part number), then die number (within part number).

## Cable Markers by Size

### ► BRADYWRAP™

Continuous strip/cut-to-length



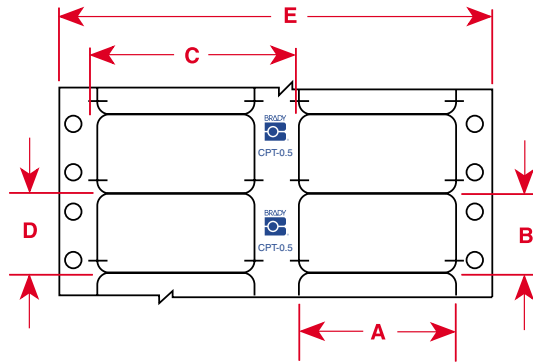
Part Number	Roll Length Ft (m)	Material	Color	Label Width Inch (mm) A	Label Height Ft (m) B	Web Width Inch (mm) C	Maximum Characters Across		
							5 CPI	10 CPI	17 CPI
<b>1.000" Label Width — 6 or 8 lines per inch</b>									
RCM-637-1.0-WT	100 (30.48)	Tedlar®	White	1.000 (25.40)	100 (30.48 m)	3.600 (91.44)	4	9	15
RCM-637-1.0-YL	100 (30.48)	Tedlar	Yellow	1.000 (25.40)	100 (30.48 m)	3.600 (91.44)	4	9	15
<b>1.500" Label Width — 6 or 8 lines per inch</b>									
RCM-637-1.5-WT	100 (30.48)	Tedlar	White	1.500 (38.10)	100 (30.48 m)	3.600 (91.44)	7	14	23
RCM-637-1.5-YL	100 (30.48)	Tedlar	Yellow	1.500 (38.10)	100 (30.48 m)	3.600 (91.44)	7	14	23
<b>2.000" Label Width — 6 or 8 lines per inch</b>									
RCM-330-2.0-WT	100 (30.48)	Polyolefin	White	2.000 (50.80)	100 (30.48 m)	3.600 (91.44)	9	19	32
RCM-330-2.0-YL	100 (30.48)	Polyolefin	Yellow	2.000 (50.80)	100 (30.48 m)	3.600 (91.44)	9	19	32
RCM-637-2.0-WT	100 (30.48)	Tedlar	White	2.000 (50.80)	100 (30.48 m)	3.600 (91.44)	9	19	32
RCM-637-2.0-YL	100 (30.48)	Tedlar	Yellow	2.000 (50.80)	100 (30.48 m)	3.600 (91.44)	9	19	32

Tedlar® is a registered trademark of DuPont.

**Note:** Labels in chart are sorted in order by width, height, 3 digit material number (within part number), then die number (within part number).

► CONNECTOR PULL-TABS

Flat cable markers

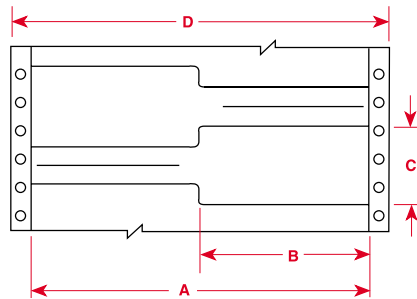


Part Number	Labels Per Roll	Material	Color	Labels Per Row	Label Width Inch (mm) A	Label Height Inch (mm) B	Horizontal Repeat Inch (mm) C	Vertical Repeat Inch (mm) D	Web Width Inch (mm) E
<b>3.000" Label Width — 6 or 8 lines per inch</b>									
CPT-0.5	500	B-505 Flame-Resistant Polyester	White	2	3.000 (76.20)	0.500 (12.70)	3.500 (88.90)	0.500 (12.70)	7.500 (190.50)
CPT-1.0	500	B-505 Flame-Resistant Polyester	White	2	3.000 (76.20)	1.000 (25.40)	3.500 (88.90)	1.000 (25.40)	7.500 (190.50)
CPT-1.5	500	B-505 Flame-Resistant Polyester	White	2	3.000 (76.20)	1.500 (38.10)	3.500 (88.90)	1.500 (38.10)	7.500 (190.50)
CPT-2.0	500	B-505 Flame-Resistant Polyester	White	2	3.000 (76.20)	2.000 (50.80)	3.500 (88.90)	2.000 (50.80)	7.500 (190.50)
CPT-2.5	500	B-505 Flame-Resistant Polyester	White	2	3.000 (76.20)	2.500 (63.50)	3.500 (88.90)	2.500 (63.50)	7.500 (190.50)
CPT-3.25	500	B-505 Flame-Resistant Polyester	White	2	3.000 (76.20)	3.250 (82.55)	3.500 (88.90)	3.250 (82.55)	7.500 (190.50)

**Note:** Labels in chart are sorted in order by width, height, 3 digit material number (within part number), then die number (within part number).

► CLOTH TAGS

Cable and wire harness markers



Part Number	Pieces Per Package	Material	Color	Labels Per Row	Label Width Inch (mm) A	Width of Write-On Area Inch (mm) B	Label Height Inch (mm) C	Web Width Inch (mm) D
<b>4.500" Label Width (2.250" tab area) — 6 or 8 lines per inch</b>								
CT-1	1,800	B-503 (Self-Extinguishing Cloth)	White	2	4.500 (114.30)	2.250 (57.15)	1.000 (25.40)	5.500 (139.70)

**Note:** Labels in chart are sorted in order by width, height, 3 digit material number (within part number), then die number (within part number).